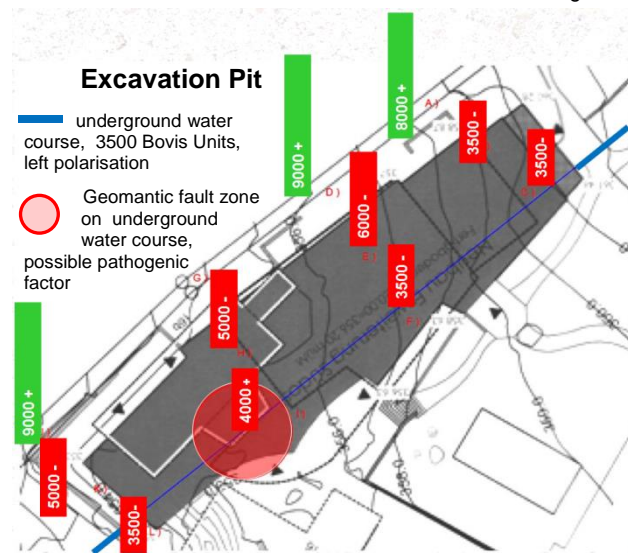


School Mayenfels Pratteln Switzerland

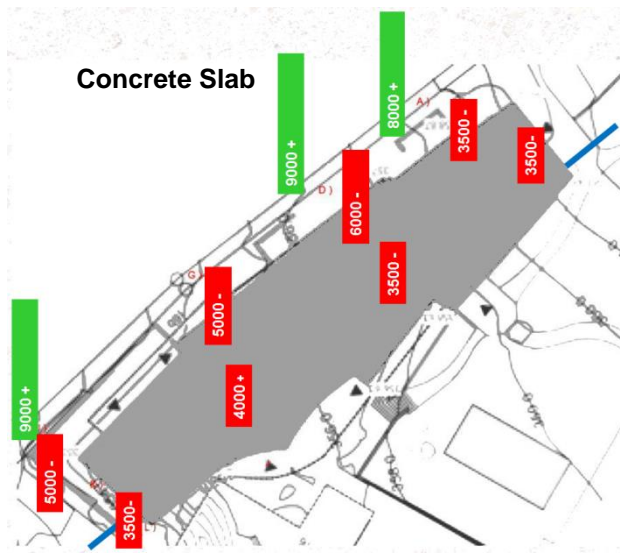


Radiesthetic Examinations

Markus Zumbrunn, 4463 Buus / Switzerland
T +41 61 841 06 09
mzumbrunn@gmx.ch



Before concrete slab



Using conventional concrete



Finished with CARBOMETUM® screed over the conventional concrete slab

Comment

The addition of **CARBOMETUM®** leads to a bio-energetic harmonisation of cement-based building materials. This produces a positive influence on the vitality of the occupants and also reduces the influence of negative geomantic zones (such as underground watercourses).

With classical Radiesthetic examinations, the polarity and

intensity of the bio-energetic field is checked (right polarisation **+** shows a harmony with the field of vitality of human beings, left polarisation **-** shows a disharmony).

The intensity of influence is expressed in Bovis Units. To reach a harmonious environment for living and working, it is ideal to have a right polarisation with Bovis Units of 6'500 – 9'000.

With the addition of **CARBOMETUM®** these criteria were easily reached in the regions where the excavation pit was not negatively influenced by geomantic zones and underground water courses.

A right polarisation was reached for the entire floor area (over all storeys) of the school.